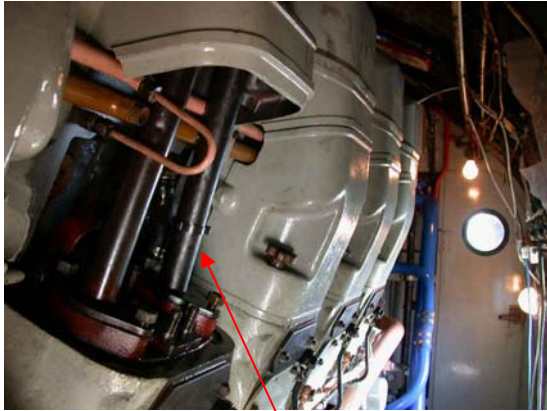
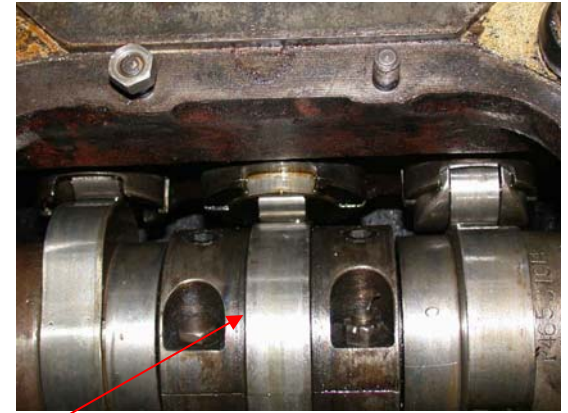


Class 40 cam shaft equipment



Individual Cylinder Arrangement
Each cylinder has its own fuel pump, injector and cam followers. This is a general shot of the arrangement after removal of fuel pumps and injectors.



Cam Followers.
The valves on the cylinder head and the fuel injection system are driven by followers which are actuated by the cam shaft lobes. Each cylinder has three—Air, Fuel and Exhaust. This top view shows the three followers after overhaul, waiting for the fuel pump (centre) to be fitted



Cam Shaft
The cam shaft ends with a timing chain cog and gear linkage to the engine governor (B bank only)



Cam Shafts
The cam shafts are made up of four sections with individually removable cam sections. The cam shafts are fed into the power unit from the 'free' end, section by section and bolted together during installation



Cam Followers
Each cam follower has a roller that runs on the cam shaft lobes. Almost all the rollers on 40118 have been replaced. In addition the pins and bushes have also been replaced. A special tool is required to replace the bushes

